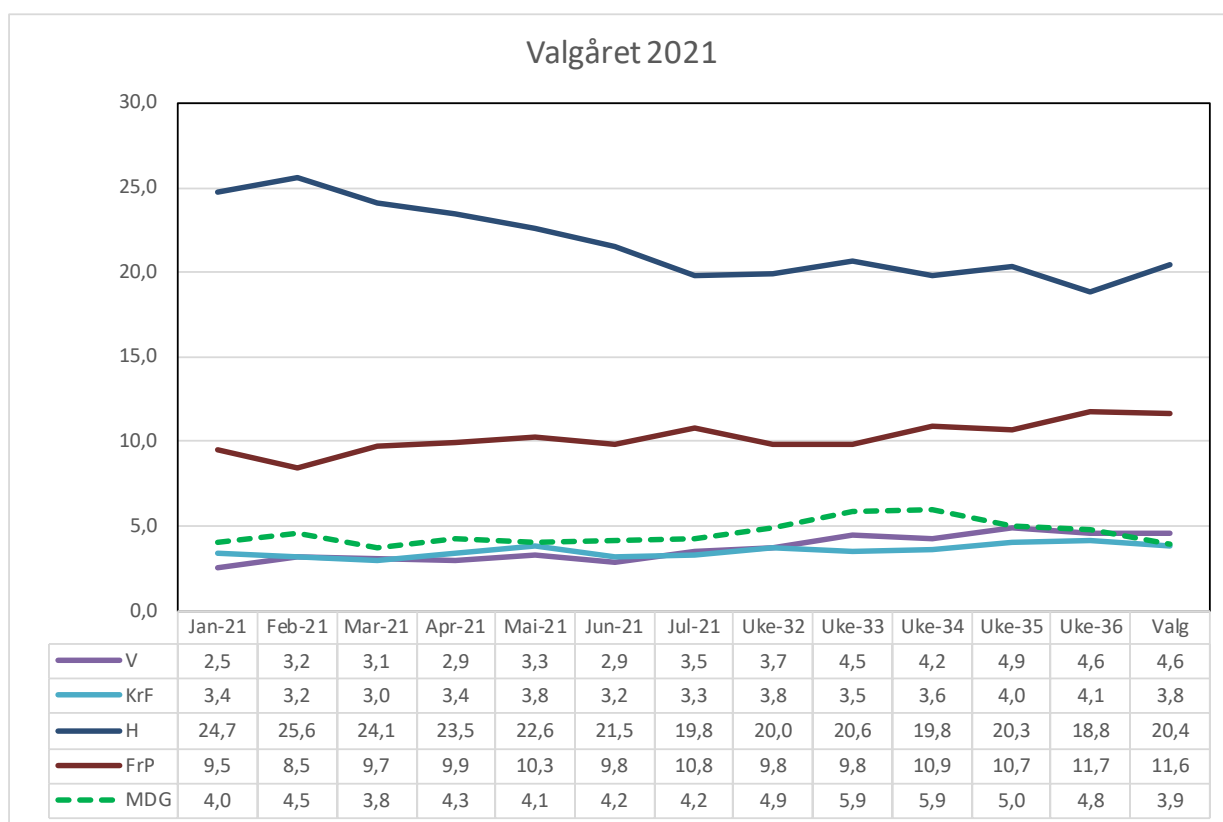
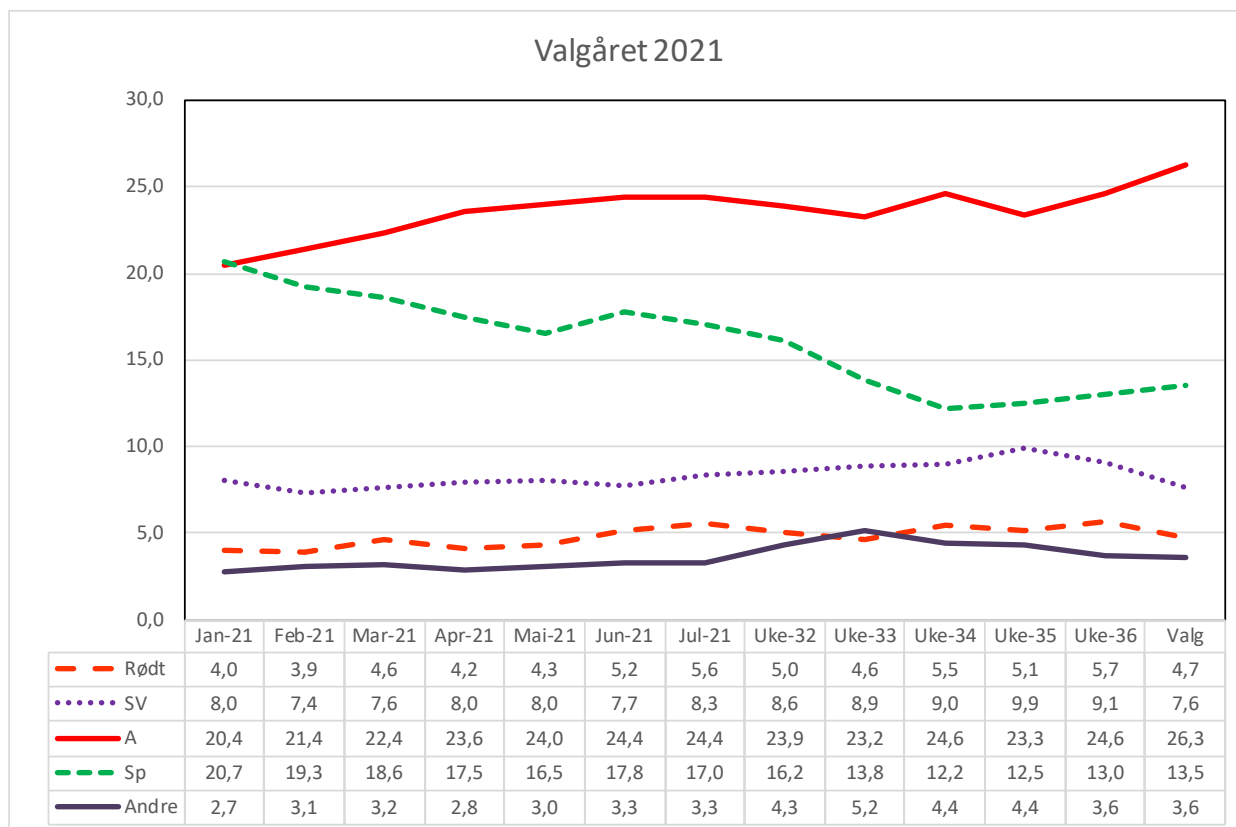


## Gjennomsnittlig opplutning på meningsmålingene foran stortingsvalget 2021



## Mandatfordeling:

	Jan-21	Feb-21	Mar-21	Apr-21	Mai-21	Jun-21	Jul-21	Uke-32	Uke-33	Uke-34	Uke-35	Uke-36	Valg
Rødt	7	2	9	7	8	9	10	9	8	10	9	10	8
SV	14	14	14	14	14	14	15	16	16	16	17	16	13
A	37	41	42	44	44	44	45	44	43	45	43	44	48
V	2	2	2	2	2	2	2	2	8	7	8	8	8
KrF	2	2	1	2	3	1	1	3	3	3	7	7	3
Sp	40	37	36	34	31	36	32	32	26	22	22	23	28
H	43	47	45	41	41	38	36	36	37	36	36	33	36
FrP	17	16	18	17	19	18	20	18	17	19	18	20	21
MDG	7	8	2	8	7	7	8	9	11	11	9	8	3
Andre	0	0	0	0	0	0	0	0	0	0	0	0	1
	169	169	169	169	169	169	169	169	169	169	169	169	169