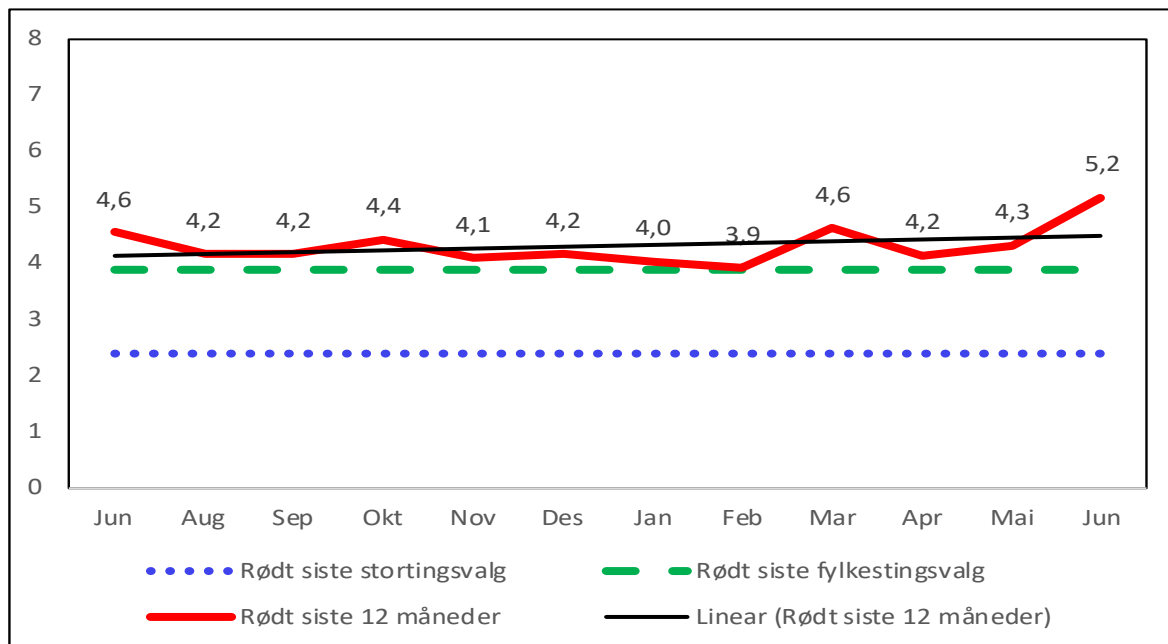


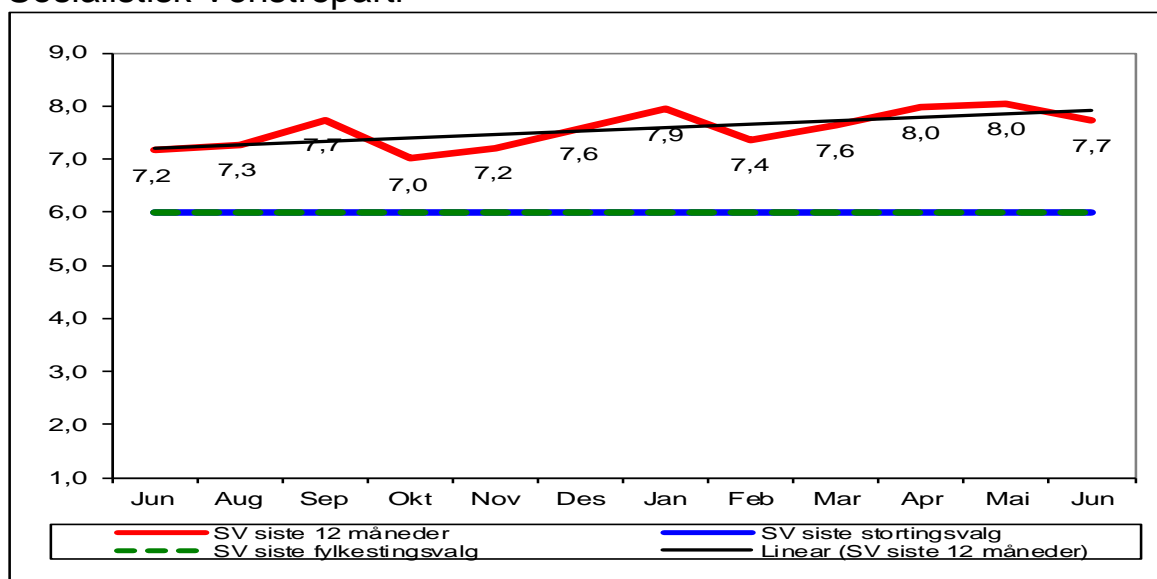
Gjennomsnitt av meningsmålinger (stortingsvalg) siste 12 måneder, pr. juni 2021

(den svarte streken viser en lineær regresjonslinje)

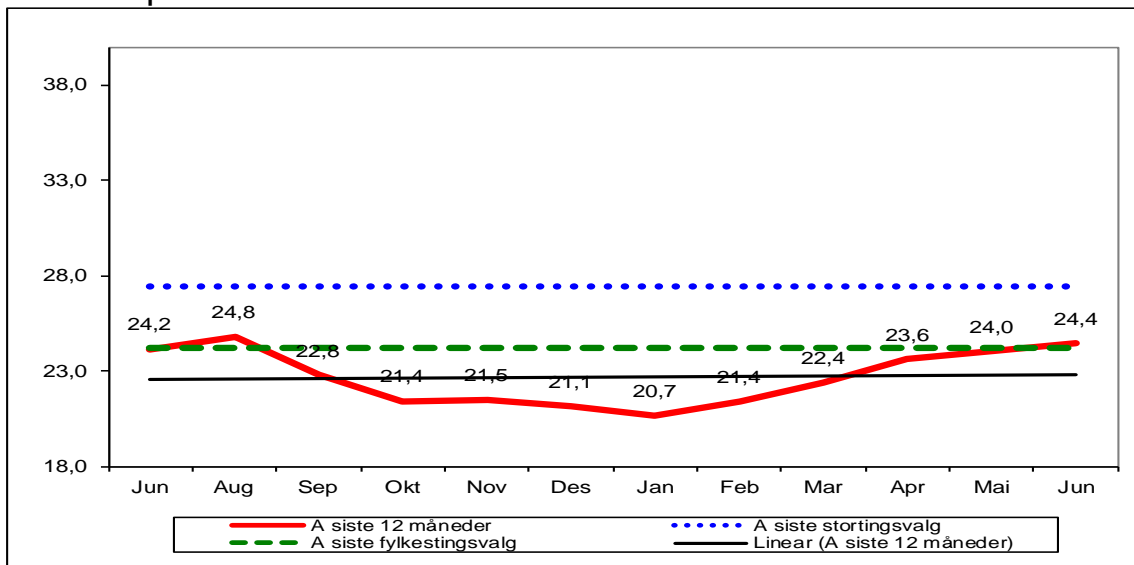
Rødt



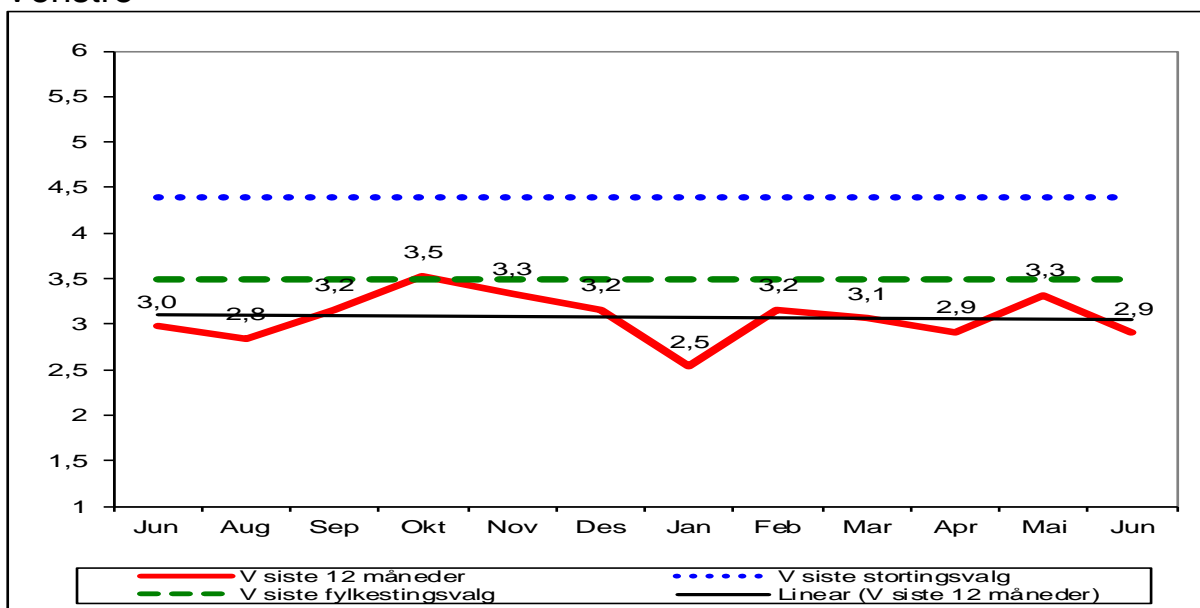
Sosialistisk Venstreparti



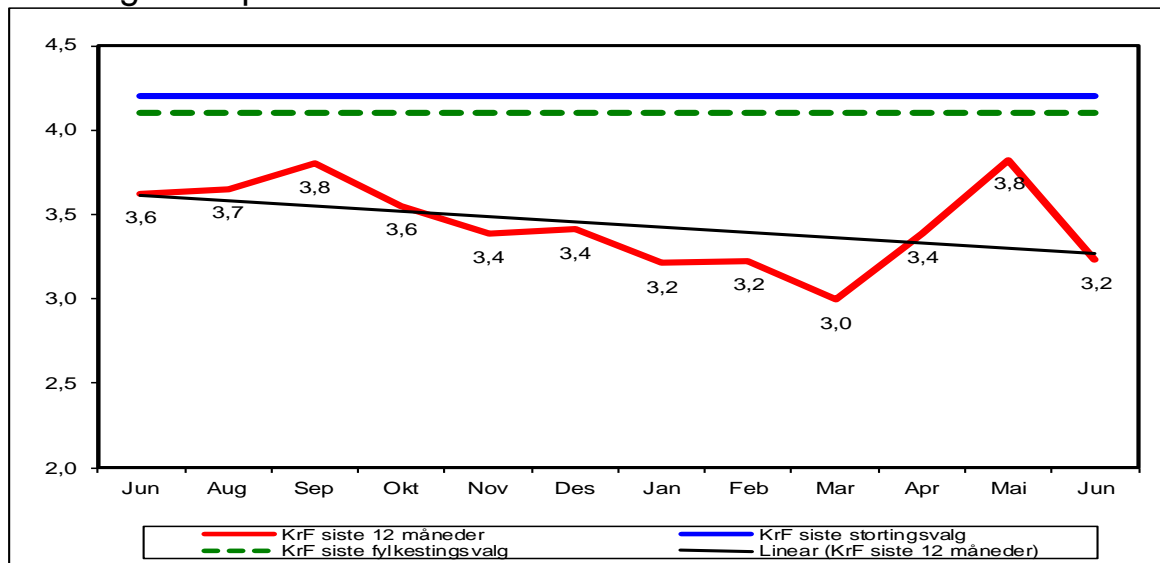
Arbeiderpartiet



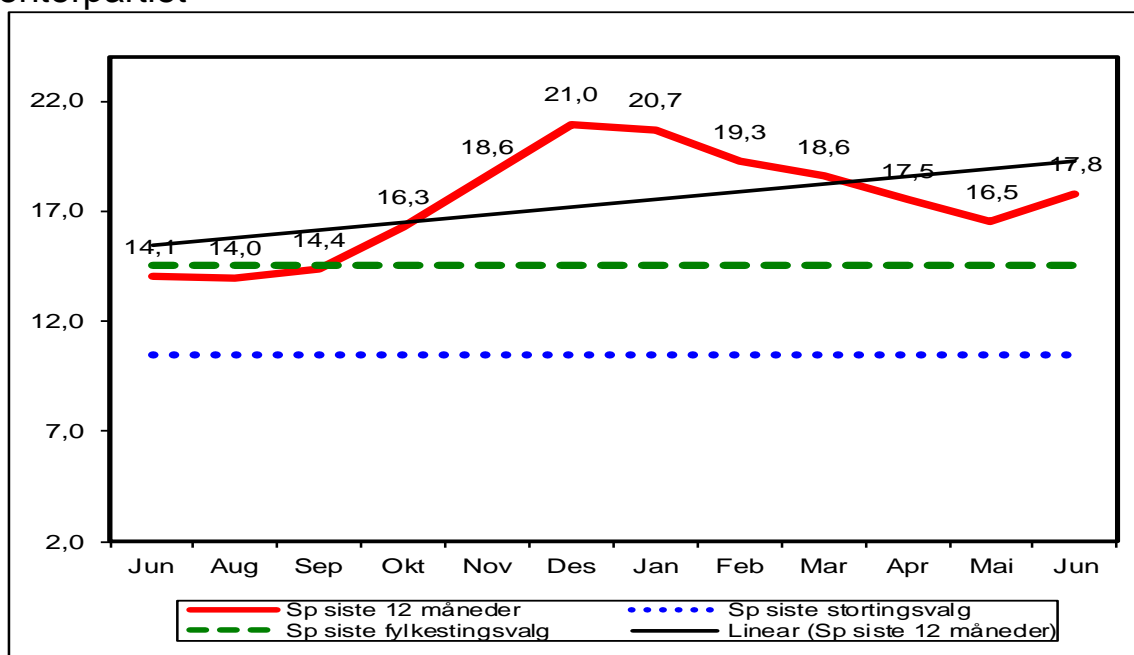
Venstre



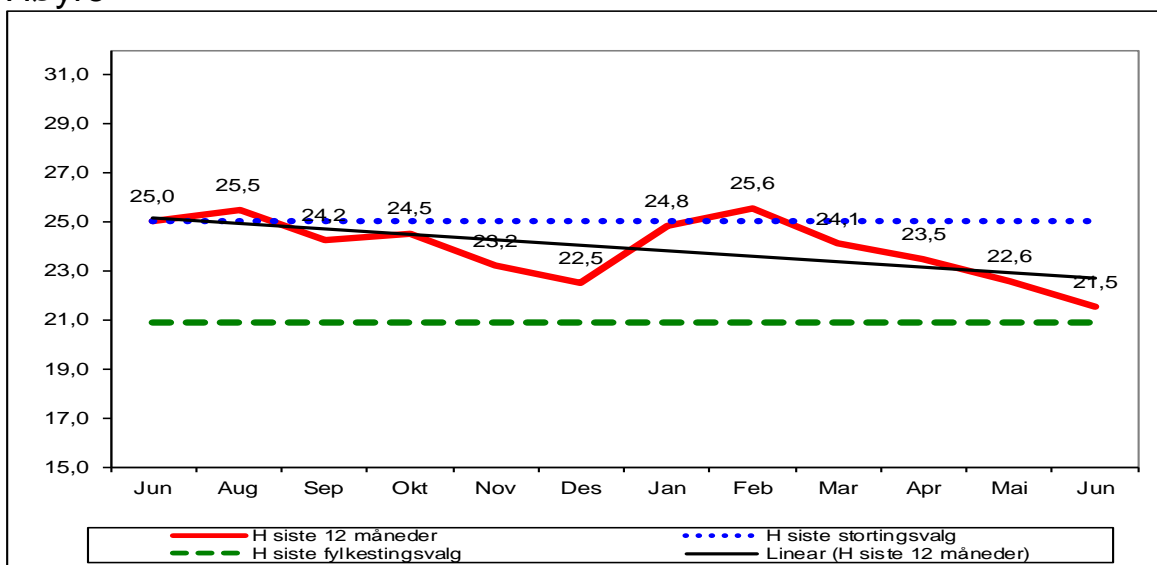
Kristelig Folkeparti



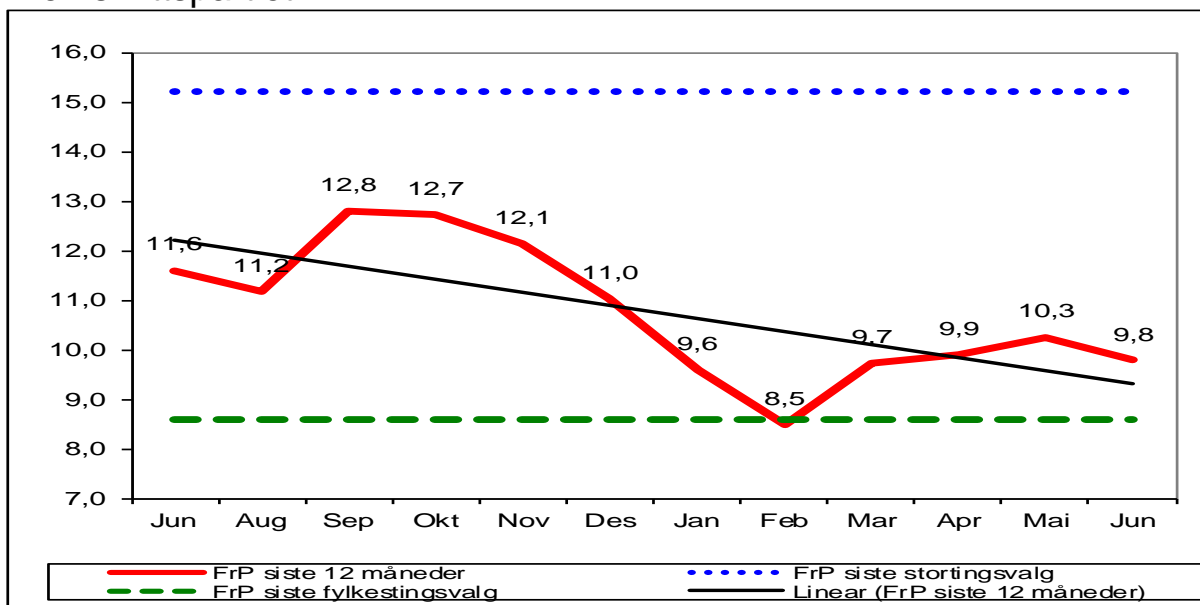
Senterpartiet



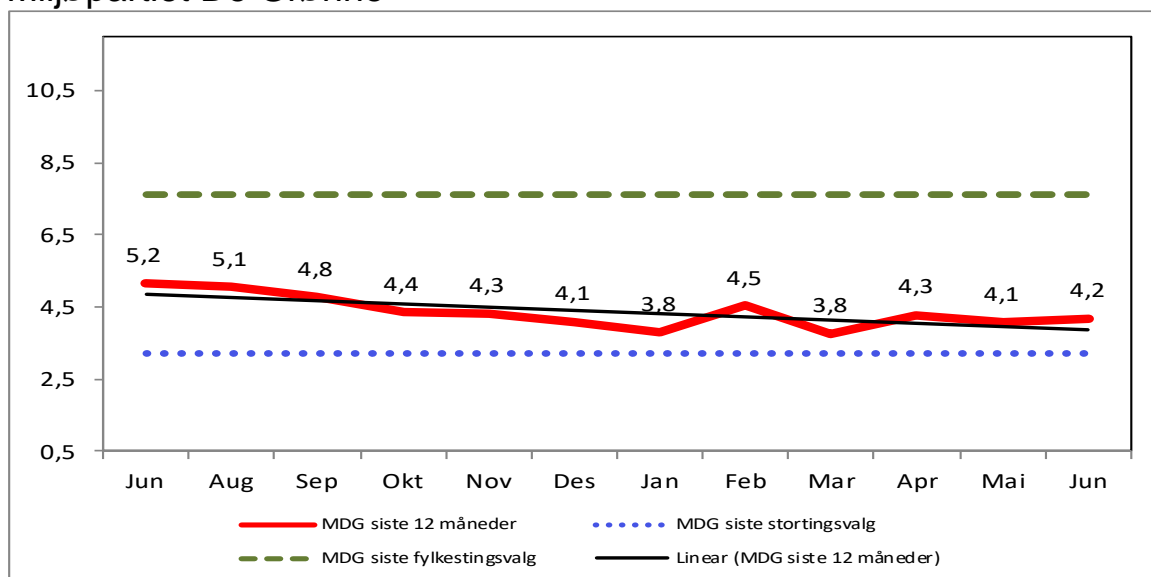
Høyre



Fremskrittspartiet



Miljøpartiet De Grønne



Alle partiene samlet: siste 12 måneder

